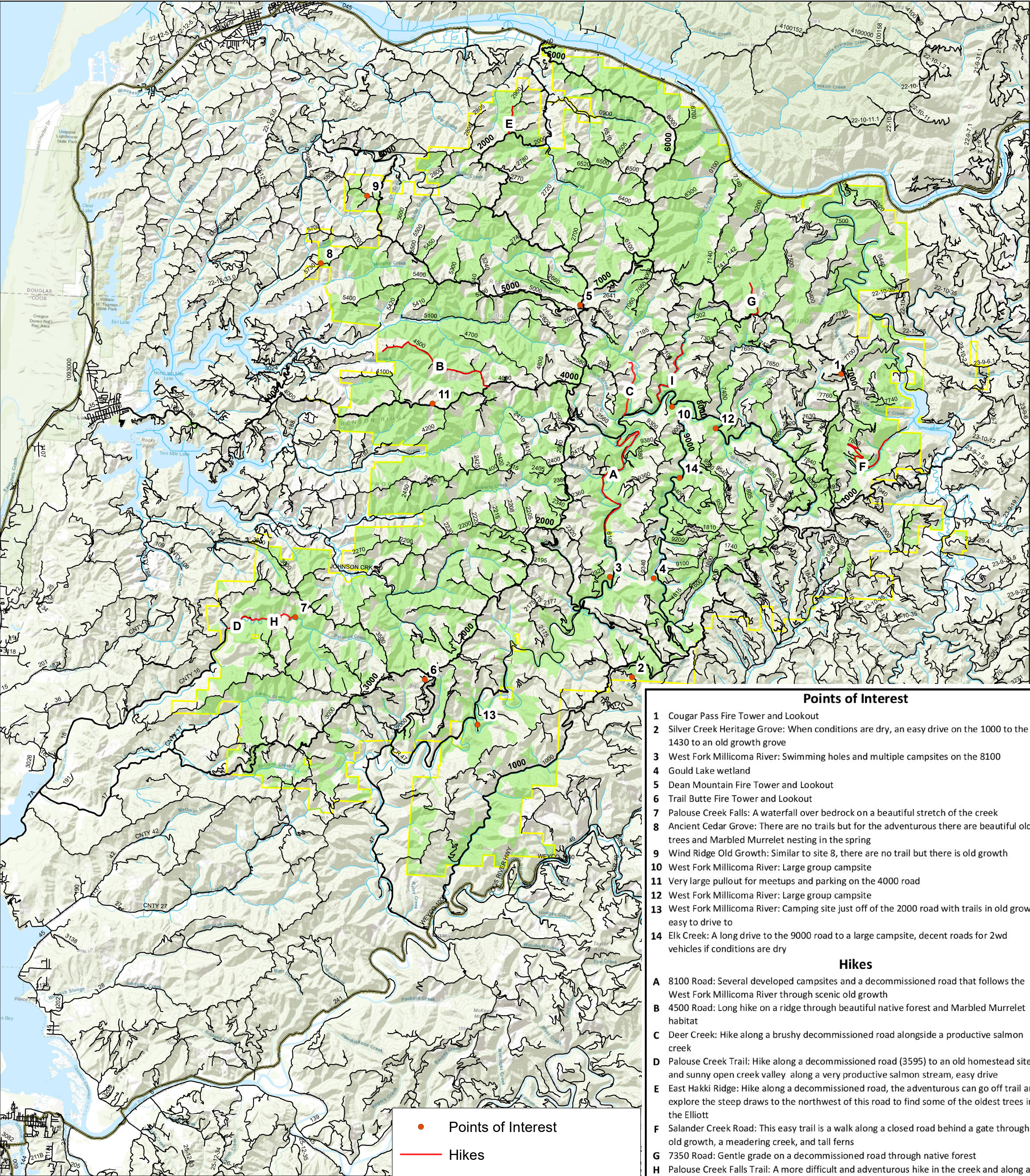


Elliott State Forest Recreation Map



Points of Interest

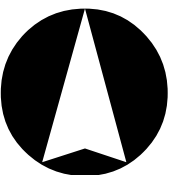
- 1 Cougar Pass Fire Tower and Lookout
- 2 Silver Creek Heritage Grove: When conditions are dry, an easy drive on the 1000 to the 1430 to an old growth grove
- 3 West Fork Millicoma River: Swimming holes and multiple campsites on the 8100
- 4 Gould Lake wetland
- 5 Dean Mountain Fire Tower and Lookout
- 6 Trail Butte Fire Tower and Lookout
- 7 Palouse Creek Falls: A waterfall over bedrock on a beautiful stretch of the creek
- 8 Ancient Cedar Grove: There are no trails but for the adventurous there are beautiful old trees and Marbled Murrelet nesting in the spring
- 9 Wind Ridge Old Growth: Similar to site 8, there are no trail but there is old growth
- 10 West Fork Millicoma River: Large group campsite
- 11 Very large pullout for meetups and parking on the 4000 road
- 12 West Fork Millicoma River: Large group campsite
- 13 West Fork Millicoma River: Camping site just off of the 2000 road with trails in old growth, easy to drive to
- 14 Elk Creek: A long drive to the 9000 road to a large campsite, decent roads for 2wd vehicles if conditions are dry

Hikes

- A 8100 Road: Several developed campsites and a decommissioned road that follows the West Fork Millicoma River through scenic old growth
- B 4500 Road: Long hike on a ridge through beautiful native forest and Marbled Murrelet habitat
- C Deer Creek: Hike along a brushy decommissioned road alongside a productive salmon creek
- D Palouse Creek Trail: Hike along a decommissioned road (3595) to an old homestead site and sunny open creek valley along a very productive salmon stream, easy drive
- E East Hakki Ridge: Hike along a decommissioned road, the adventurous can go off trail and explore the steep draws to the northwest of this road to find some of the oldest trees in the Elliott
- F Salander Creek Road: This easy trail is a walk along a closed road behind a gate through old growth, a meandering creek, and tall ferns
- G 7350 Road: Gentle grade on a decommissioned road through native forest
- H Palouse Creek Falls Trail: A more difficult and adventurous hike in the creek and along a very old closed road that can be difficult to navigate, but pays off in the end at a beautiful little plunge pool and bedrock waterfall
- I Knife creek: This closed road provides a moderate hike along knife creek with a very large Douglas Fir tree, if you hike far enough

Always take caution when driving into the Elliott State Forest. There is usually not cell service and roads may or may not be signed. You should be prepared. Please respect the forest and pick up and pack out trash. There are no restrooms or trash cans in the forest. Follow Leave No Trace guidelines. This map was created by Coast Range Forest Watch, December 2020. The forest is the ancestral homeland of the Hanis Coos, Miluk Coos, Quich peoples which are bands of the Confederated Tribes Coos Lower Umpqua Siulsaw Indians.

- Points of Interest
- Hikes
- Maintained Gravel Roads
- Unimproved Forest Roads
- Fishbearing Streams
- Native Forest (80+ yrs)
- Elliott State Forest Boundary



3 1.5 0 3 Miles